

# Good Euthanasia

- G** = Grief support materials provided
- O** = Outline caregiver and pet preferences
- O** = Offer privacy before and after death
- D** = Deliver proper technique
  
- E** = Establish rapport
- U** = Use pre-euthanasia sedation or anesthesia
- T** = Thorough, complete consent
- H** = Helpful and compassionate personnel
- A** = Adequate time
- N** = Narrate the process
- A** = Avoid pain and anxiety
- S** = Safe space to gather
- I** = Inclusion of loved ones
- A** = Assistance with body care

This acronym holds the phrase **Good Euthanasia** and each letter represents one of the 14 essential components of the ideal companion animal euthanasia appointment. This list is to be used as a point of reference for veterinary teams working with caregivers and their pets during this important time.

Another key consideration, not included in the list of procedural components, is the emotional health of the veterinary team. All involved personnel are encouraged to practice self-care before, during, and after every appointment.

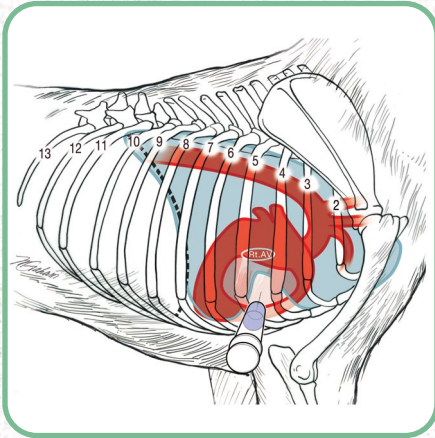
The Companion Animal Euthanasia Training Academy provides outstanding education in companion animal euthanasia to improve the overall experience for the pet, caregiver, and veterinary team.



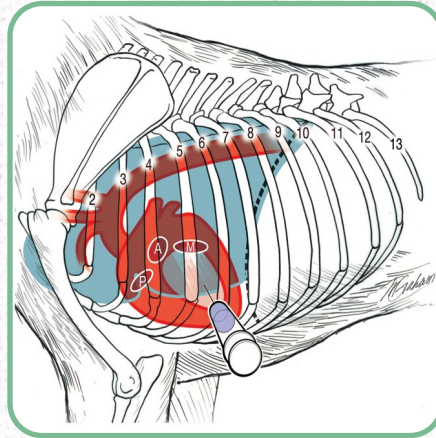
# Intra-Organ Euthanasia Technique Illustrations

## Intracardiac Injection

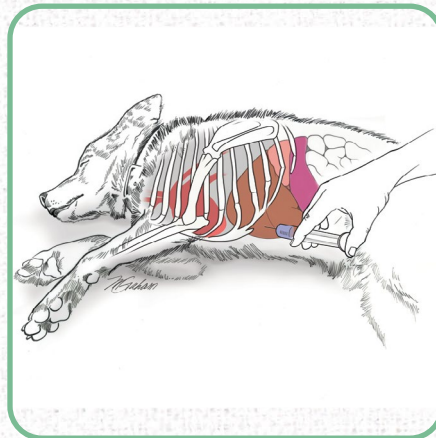
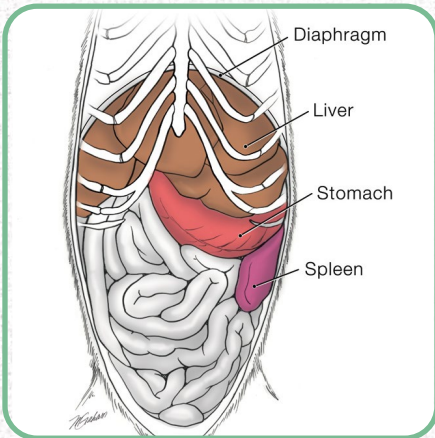
Right side



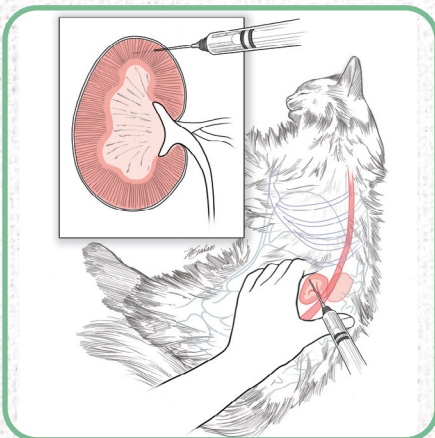
Left side



## Intrahepatic Injection



## Intrarenal Injection





# 5 Ways to Approach Pet Aftercare

- 1 Ask clients if they have a preferred aftercare partner
- 2 Tour local facilities once a year
- 3 Encourage clients to work directly with aftercare companies for customized care and additional pet loss support
- 4 Utilize respectful body transport bags
- 5 Add aftercare descriptions to your website

# Pre-Euthanasia Protocol for Dogs

# Pre-Euthanasia Protocols for Cats

Doses in all protocols are intended for pre-euthanasia purposes only and may be slightly higher than the recommended doses for other purposes.

Weight in lbs.	Ketamine 100 mg/mL	Xylazine 100 mg/mL	Acepromazine 10 mg/mL	Butorphanol 10 mg/mL
10	0.1	0.05	0.1	0.05
20	0.2	0.1	0.2	0.1
30	0.3	0.15	0.3	0.15
40	0.4	0.2	0.4	0.2
50	0.5	0.25	0.5	0.25
60	0.6	0.3	0.6	0.3
70	0.7	0.35	0.7	0.35
80	0.8	0.4	0.8	0.4
90	0.9	0.45	0.9	0.45
100	1	0.5	1	0.5
110	1.1	0.55	1.1	0.55
120	1.2	0.6	1.2	0.6
130	1.3	0.65	1.3	0.65
140	1.4	0.7	1.4	0.7
150	1.5	0.75	1.5	0.75
160	1.6	0.8	1.6	0.8

Drugs can be combined in same syringe for SC or IM administration.

## Protocol 1

Drugs	Concentration	mLs/lb	Dose=mg/lb
Dexmedetomidine	0.5 mg/mL	0.02 - 0.04	0.01 - 0.02
Ketamine	100 mg/mL	0.02 - 0.04	2 - 4
Butorphanol	10 mg/mL	0.02 - 0.04	0.2 - 0.4

Total volume per lb = 0.06 - 0.12 mL

## Protocol 2

Drugs	Concentration	mLs/lb	Dose=mg/lb
Tiletamine/Zolazepam	100 mg/mL	0.01 - 0.02	1 - 2
Ketamine	100 mg/mL	0.01 - 0.02	1 - 2
Acepromazine	10 mg/mL	0.005 - 0.01	0.05 - 0.1

Total volume per lb = 0.025 - 0.05 mL

Drugs in both protocols can be combined in same syringe for SC or IM administration.



For additional end-of-life care resources and euthanasia protocols, including aggressive dog sedation, please scan code or visit [Info.LapofLove.com/Vet-Resources](http://Info.LapofLove.com/Vet-Resources)

