

# GOOD EUTHANASIA

**G** = Grief support materials provided

**O** = Outline caregiver and pet preferences

**O** = Offer privacy before and after death

**D** = Deliver proper technique

**E** = Establish rapport

**U** = Use pre-euthanasia sedation or anesthesia

**T** = Thorough, complete consent

**H** = Helpful and compassionate personnel

**A** = Adequate time

**N** = Narate the process

**A** = Avoid pain and anxiety

**S** = Safe space to gather

**I** = Inclusion of loved ones

**A** = Assistance with body care

This acronym holds the phrase **Good Euthanasia** and each letter represents one of the 14 essential components of the ideal companion animal euthanasia appointment. This list is to be used as a point of reference for veterinary teams working with caregivers and their pets during this important time.

Another key consideration, not included in the list of procedural components, is the emotional health of the veterinary team. All involved personnel are encouraged to practice self-care before, during, and after every appointment.

The Companion Animal Euthanasia Training Academy provides outstanding education in companion animal euthanasia to improve the overall experience for the pet, caregiver, and veterinary team.





# 5 Ways to Approach Pet Aftercare

1

Ask clients if they have a preferred aftercare partner

2

Tour local facilities once a year

3

Encourage clients to work directly with aftercare companies for customized care and additional pet loss support

4

Utilize respectful body transport bags

5

Add aftercare descriptions to your website





# Injectable Pre-Euthanasia Sedation & Anesthesia Protocols

## Canine

### Heavy Sedation Protocol

COMBINE INTO SINGLE SYRINGE:

- Dexmedetomidine 0.5mg/mL: 0.1mL per 4.5kg (minus 0.1mL over 25kg body wt)
- Butorphanol 10mg/mL: 0.1mL per 4.5kg
- Acepromazine 10mg/mL: 0.05mL per 4.5kg

### Anesthesia Protocol

COMBINE INTO SINGLE SYRINGE:

- Tiletamine/Zolazepam 100mg/mL: 0.1mL per 4.5kg
- Dexmedetomidine 0.5mg/mL: 0.025mL per 4.5kg
- Acepromazine 10mg/mL: 0.1mL per 4.5kg

## Feline

### Anesthesia Protocol

COMBINE INTO SINGLE SYRINGE:

- Tiletamine/Zolazepam 100mg/mL: 0.1mL per 2.5kg
- Butorphanol 10mg/mL: 0.1mL per 4.5kg
- Acepromazine 10mg/mL: 0.1mL per 4.5kg

- OR -

COMBINE INTO SINGLE SYRINGE:

- Alfaxalone 10mg/mL: 1.1-1.5mL per 4.5kg
- Butorphanol 10mg/mL: 0.1mL per 4.5kg
- Acepromazine 10mg/mL: 0.1mL per 4.5kg

## Tips

TO REDUCE PAIN ON INJECTION:

- Consider adding 1mL of saline to the syringe before injecting
- Use a 25g needle, give SQ not IM, inject slowly, and gently distract often
- Consider 2-step administration, where sedatives are given first before the anesthetic drug (e.g., butorphanol and acepromazine first, followed by tiletamine/zolazepam once relaxation is set in)

**Disclaimer:** These protocols are meant to provide options for sedation or anesthesia, ranging from heavy sedation to unconsciousness.

Intra-organ injections are only permissible during periods of unconsciousness wherein the animal is pain free and unaware the injection is occurring. When in doubt, CAETA recommends more drugs be given to ensure a pain-free death.

Giving sedative or anesthetic drugs to frail and compromised animals can result in adverse reactions or death itself. Drug combination protocols should be combined in one syringe administered intramuscular (IM) or subcutaneous (SQ) unless otherwise specified.





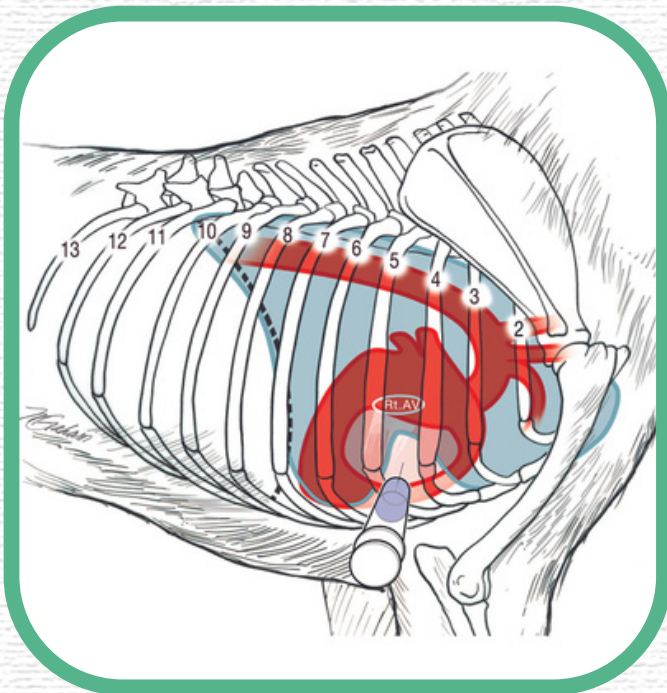


The Companion Animal  
Euthanasia Training Academy

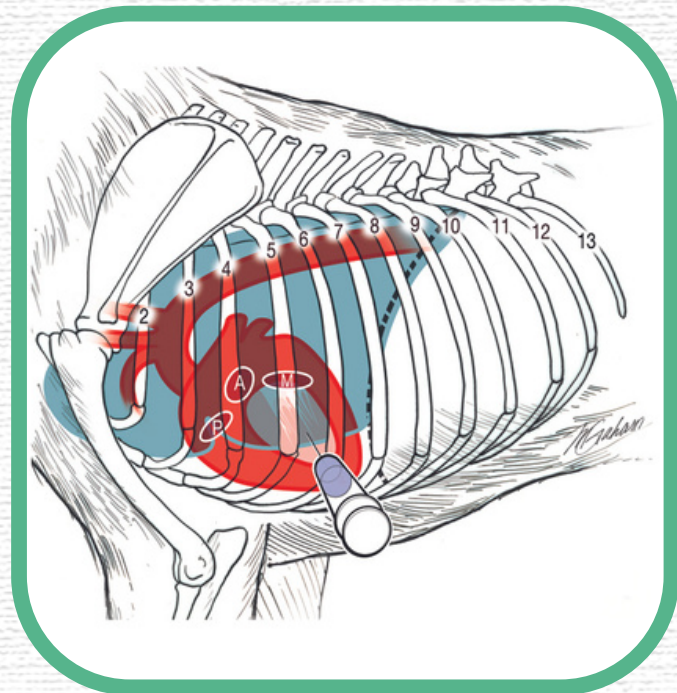
# Intra-Organ Euthanasia Technique Illustrations

## Intracardiac Injection

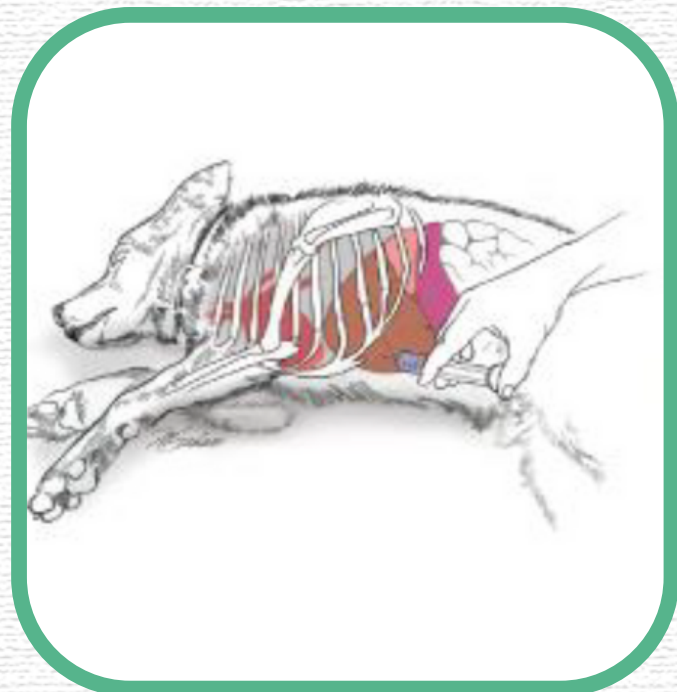
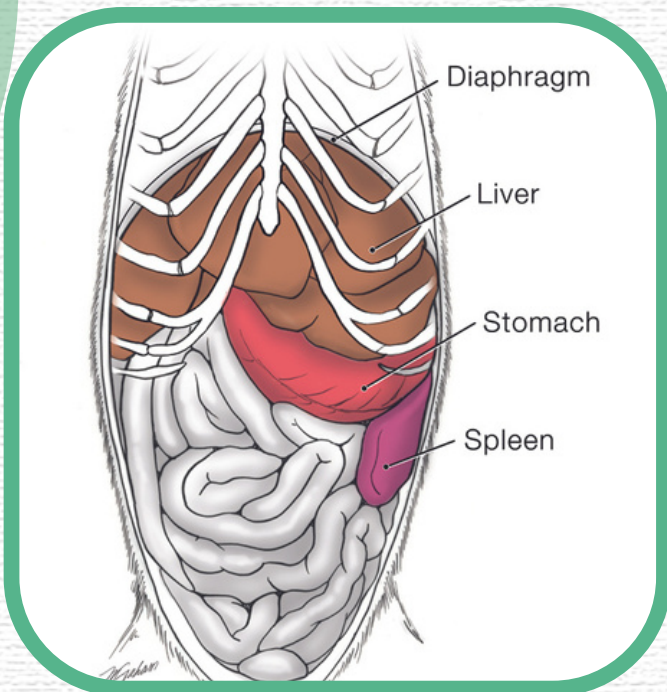
**Right-sided**



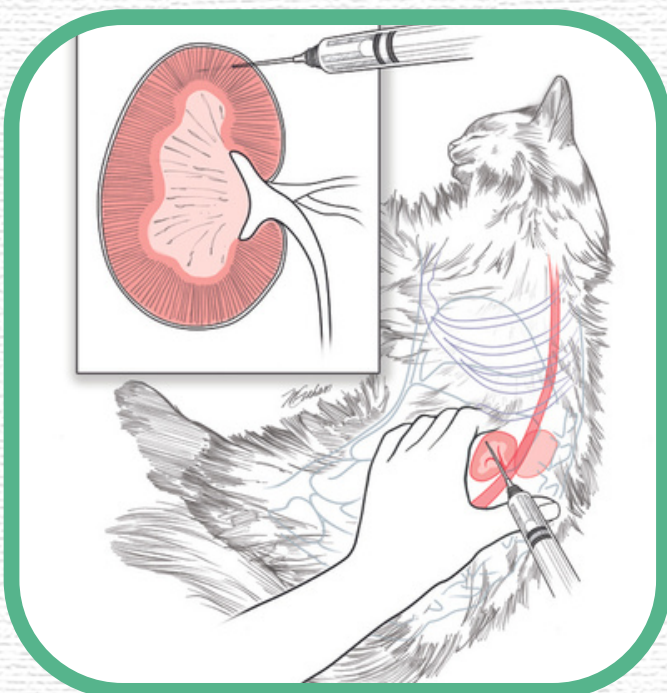
**Left-sided**



## Intrahepatic Injection



## Intrarenal Injection



[CAETAINTERNATIONAL.COM](http://CAETAINTERNATIONAL.COM)

© 2017 The Companion Animal Euthanasia Training Academy